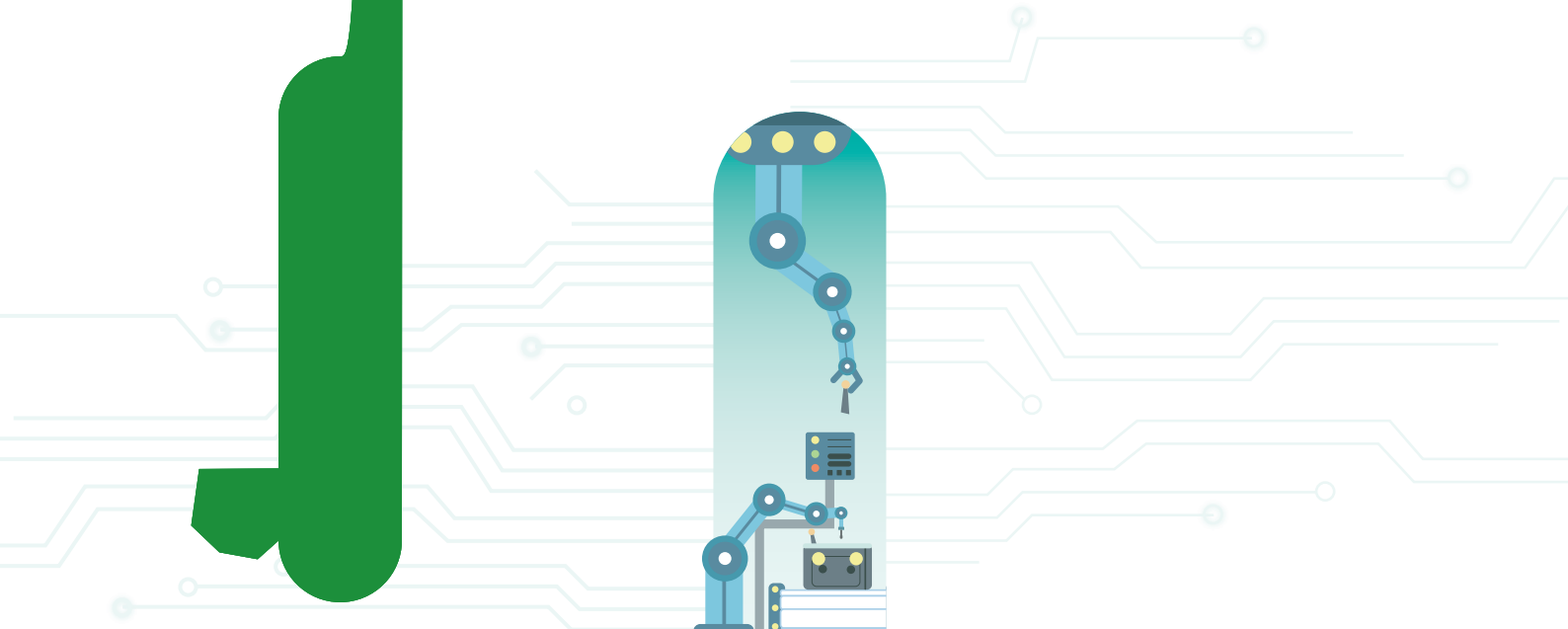
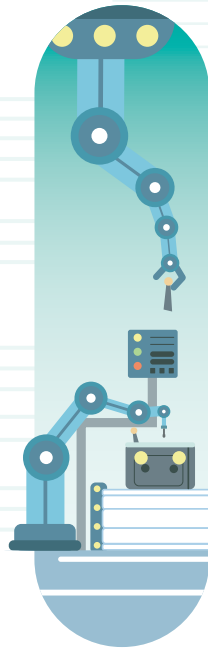
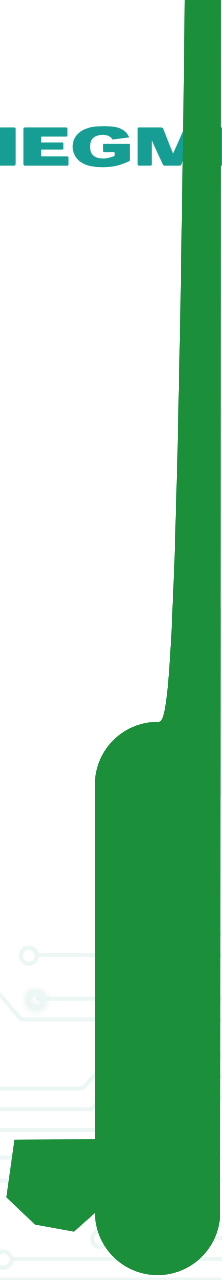


MEGMEET



CONTENTS

1

ESG
ESG

43

45 **ESG**

48

2

2

2

5

6

6

6

7

8

9

9

12

15

19

19

20

22

23

27

27

29

32

34

37

37

40

41

ESG

002851.SZ

2021 1 1 2021 12 31

1 —

ESG

ESG

ESG

idmeg@megmeef.com

www.megmeef.com

002851 2003 4.98

40

ShenJhen Megmeef Elecfidcal Co., Lfd.

63 34

62.1

41.6

4285



8

MTC Micob-Tech Coneglfanfe
2019 3

2021

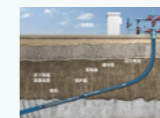
OA



LED



PLC

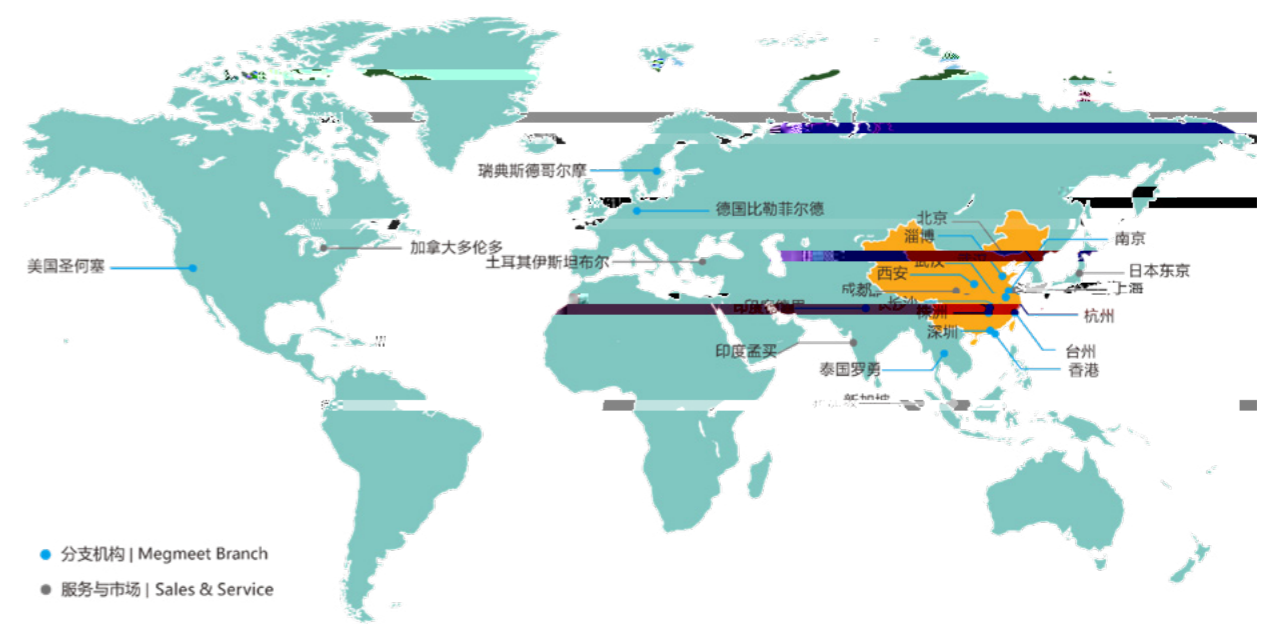
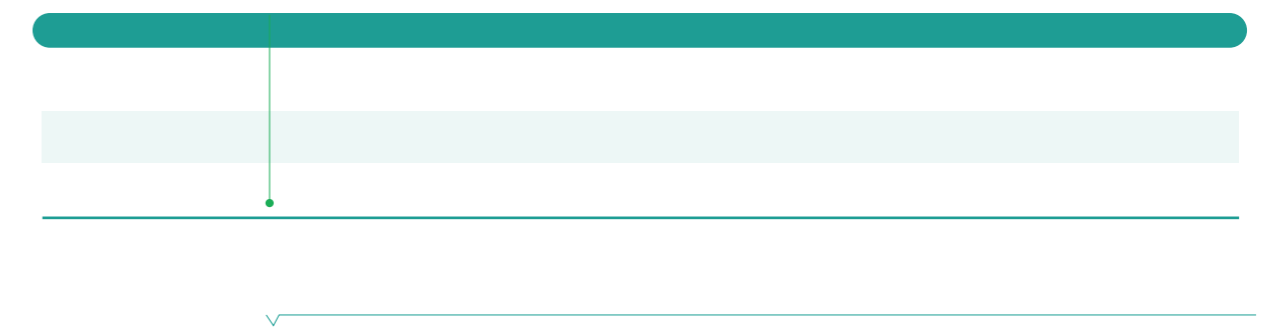
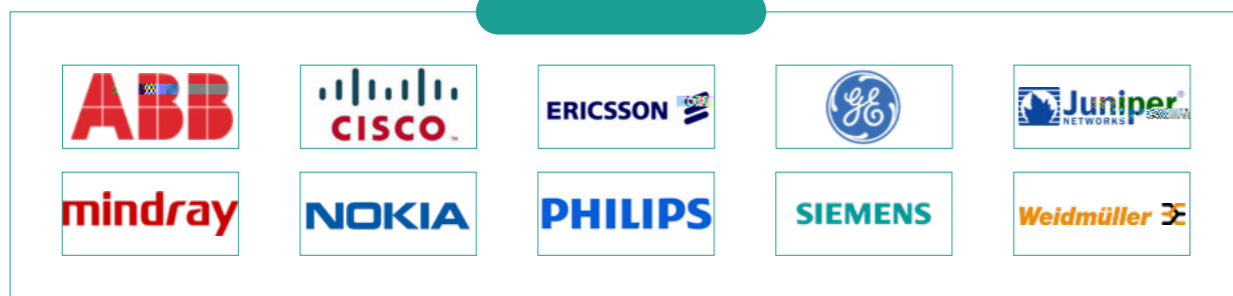


MCU

OBC

DC-DC





GRI Sfandadde

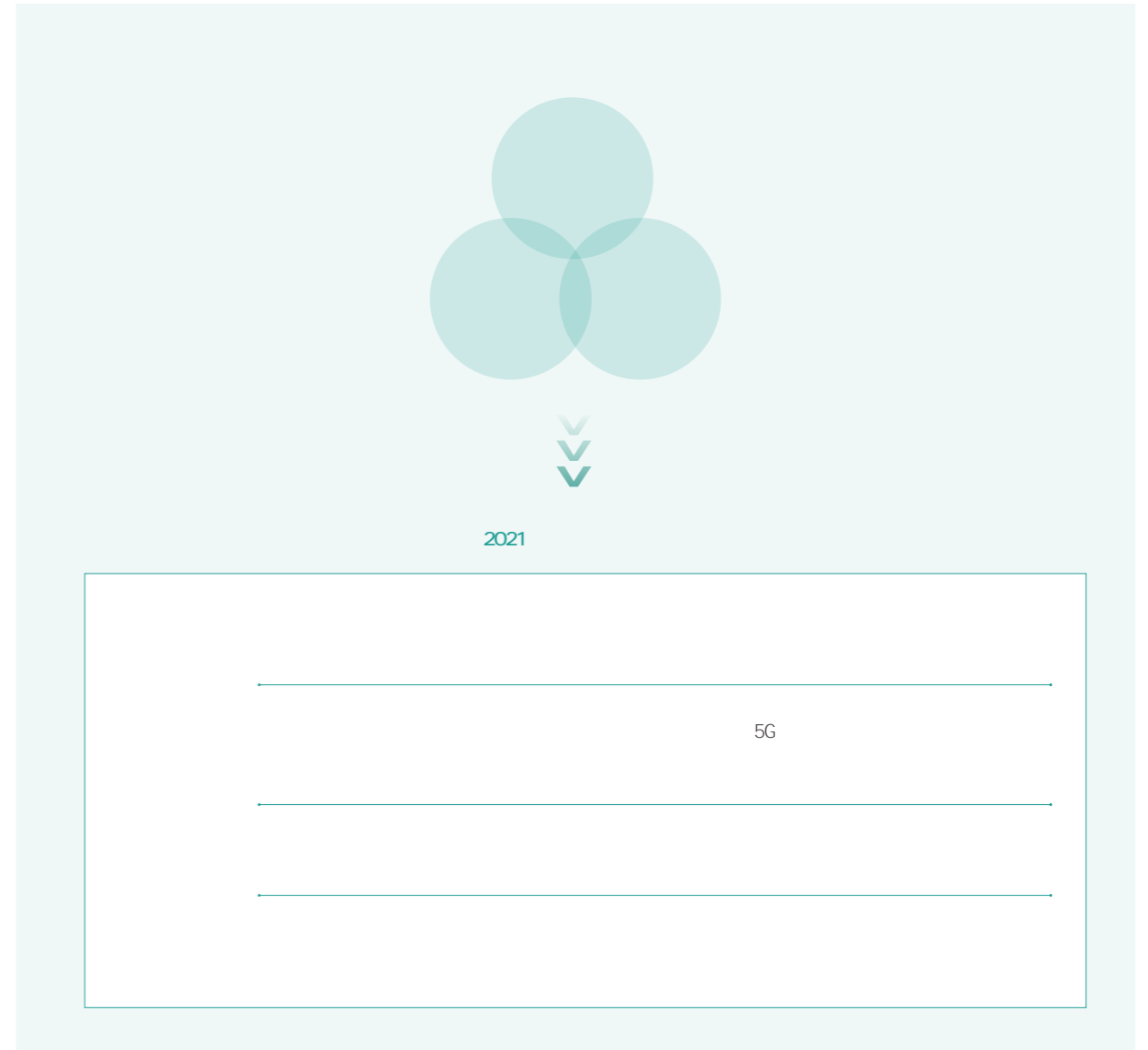
ESG

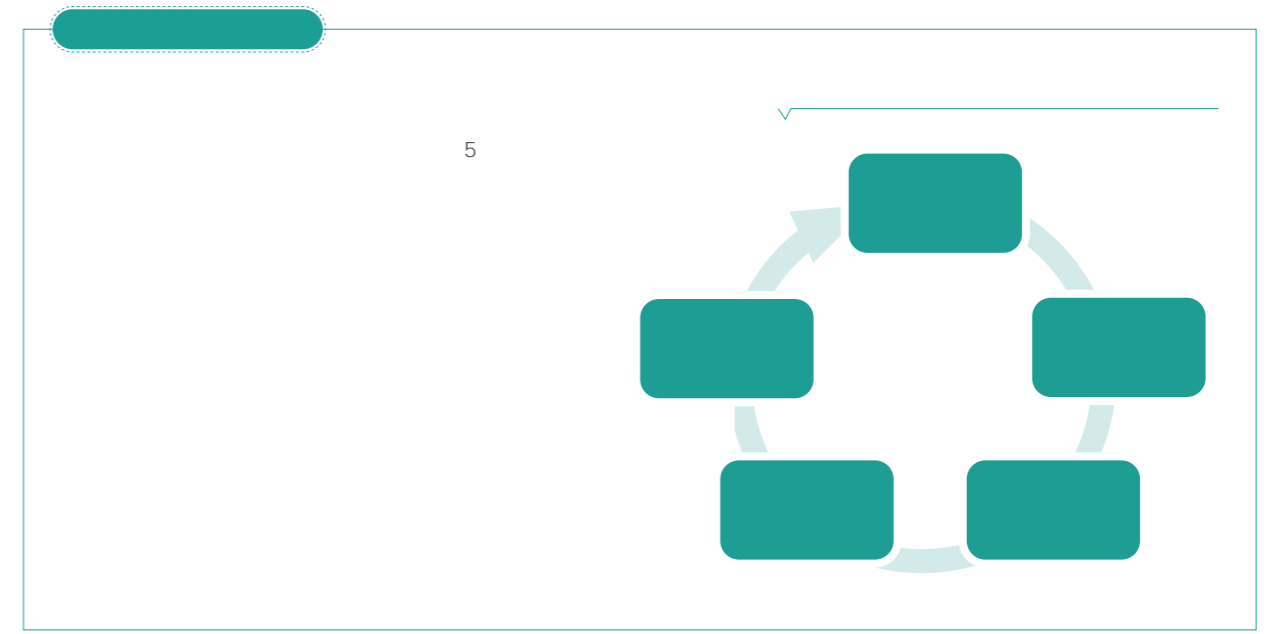
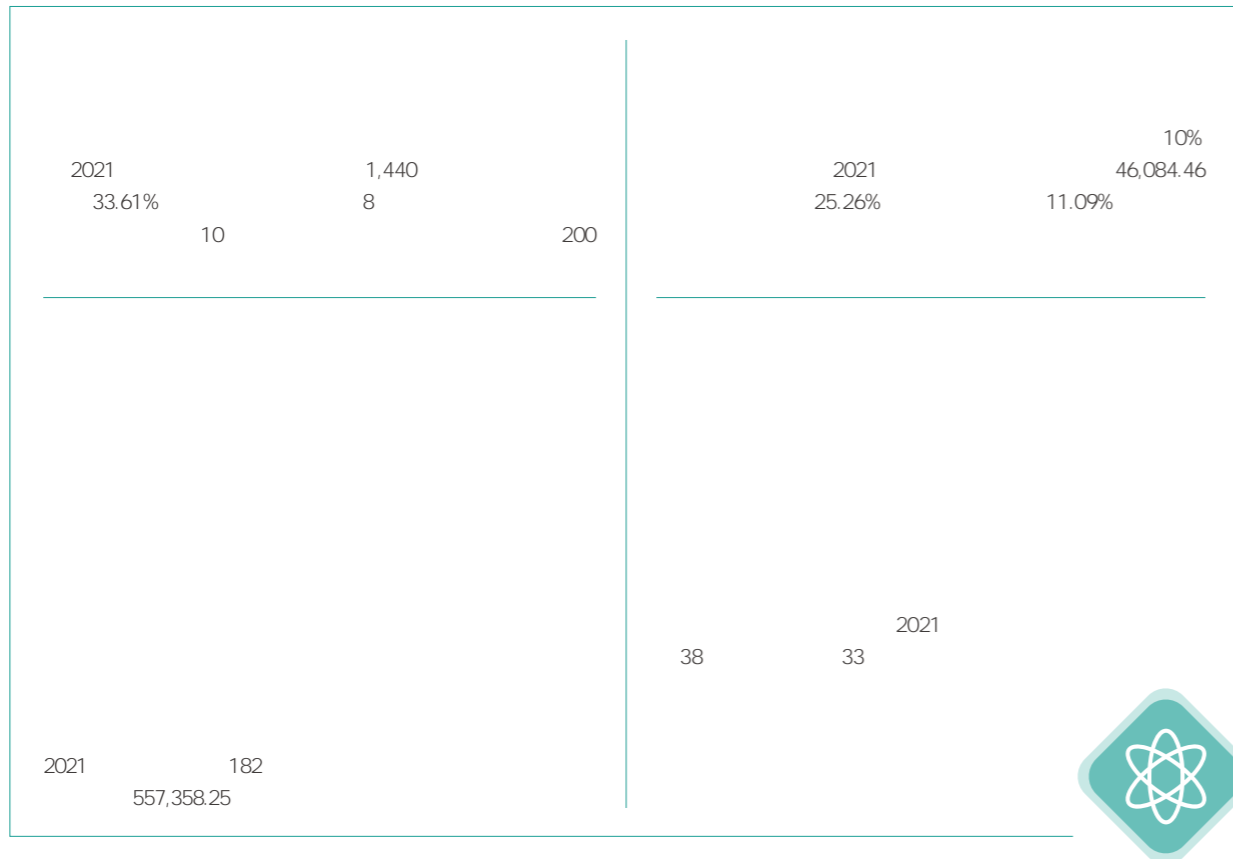
ESG

ESG



	-E	-S	-G
	· · ·	· · · ·	· ·
	· ·	· · ·	· · · ESG



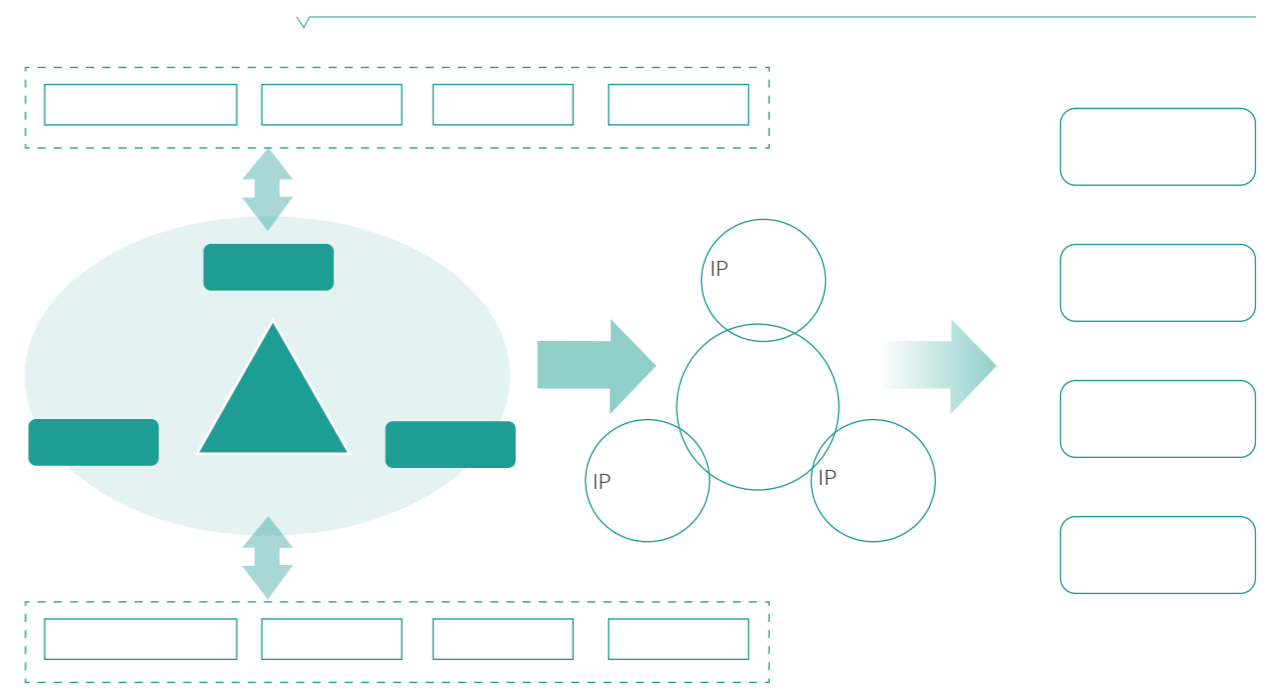


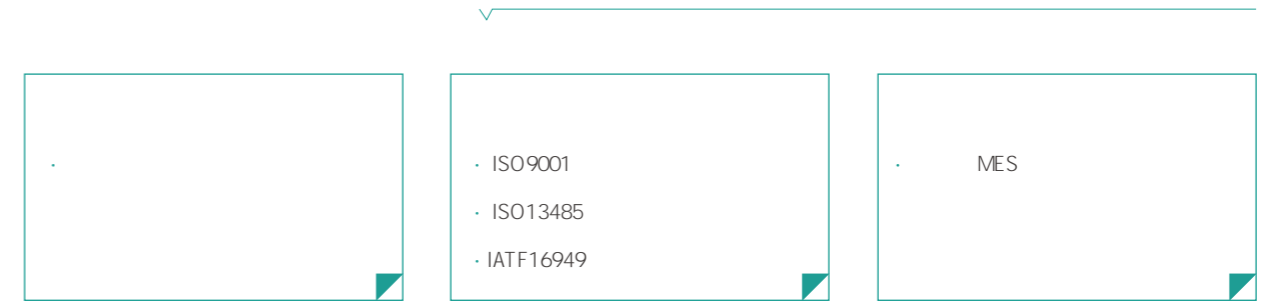
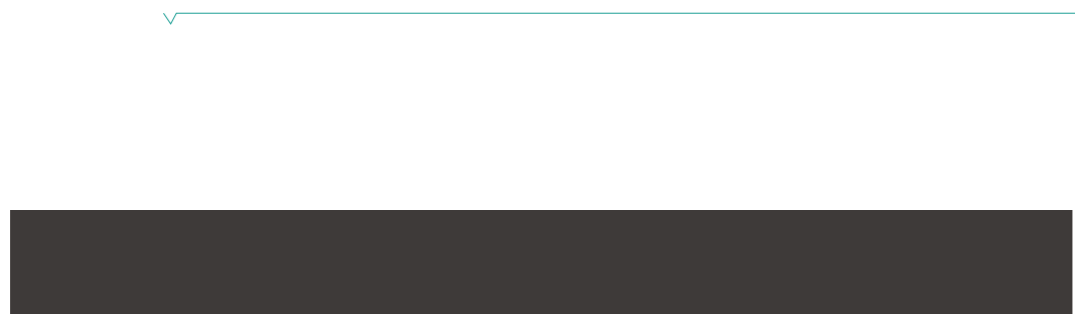
2021 8 9
2021
500

截至 2021 年底，
公司共申请专利共
件(含发明专利 312件)
其中授权专利
件(含授权发明专利 85件)

2020-2021

		2020				2021				
		51	130	44	225	71	165	103	339	50.67%
		7	88	42	137	13	178	78	269	96.35%
		74	398	125	597	85	559	191	835	39.87%
		229	612	207	1048	312	814	301	1427	36.16%
					5				12	140.00%





	<ul style="list-style-type: none"> Qgalifk Planning APQP Adhanced Pbdgcf 	
		SOE
	g± È /	

2021

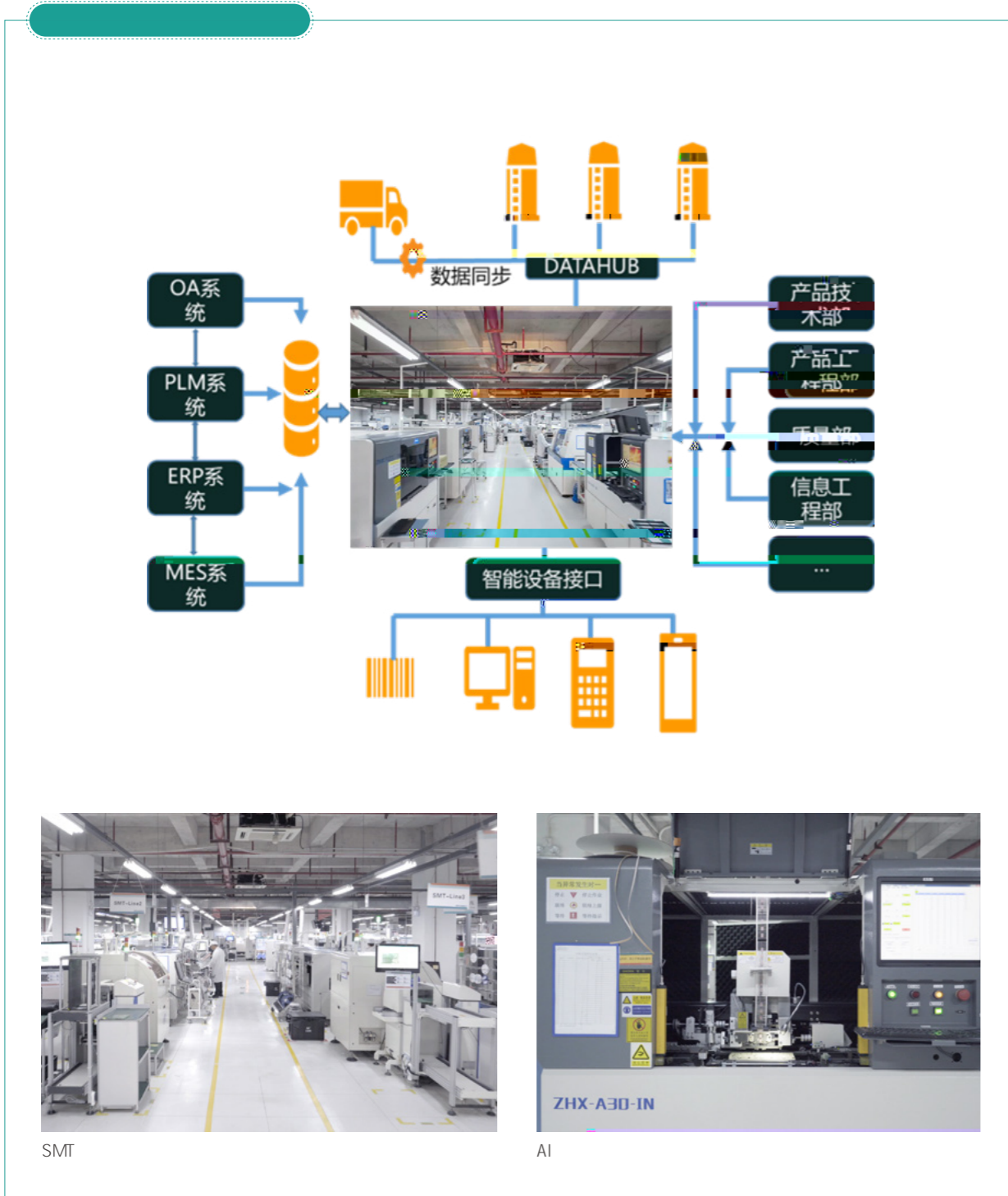
2021

100%

TL9000 ISO9001

ISO13485

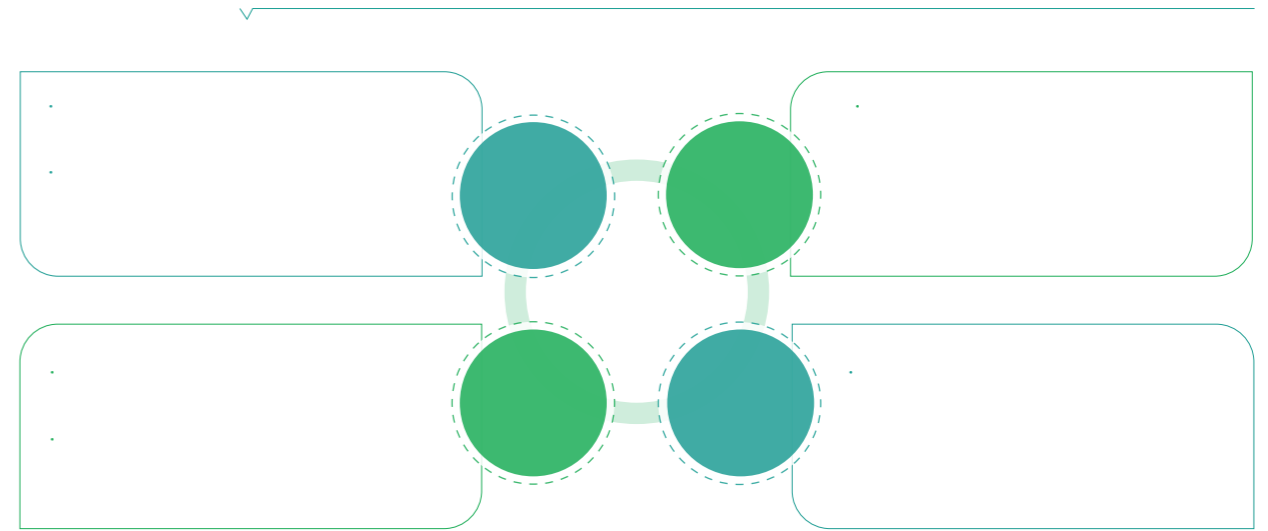
IATF16949



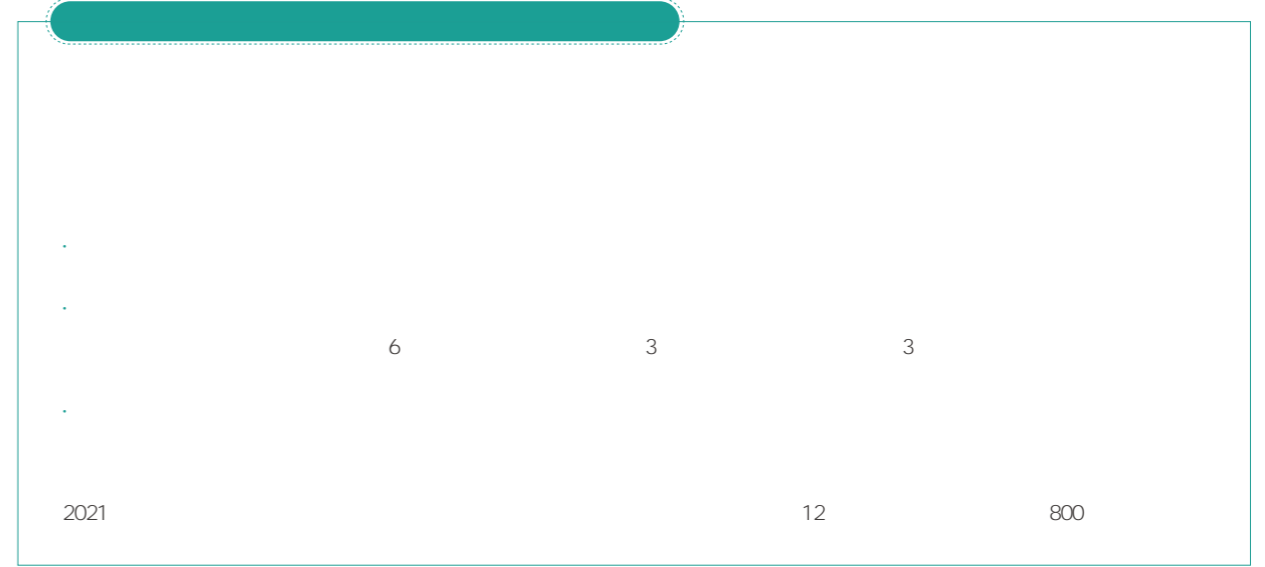
SMT

AI

10



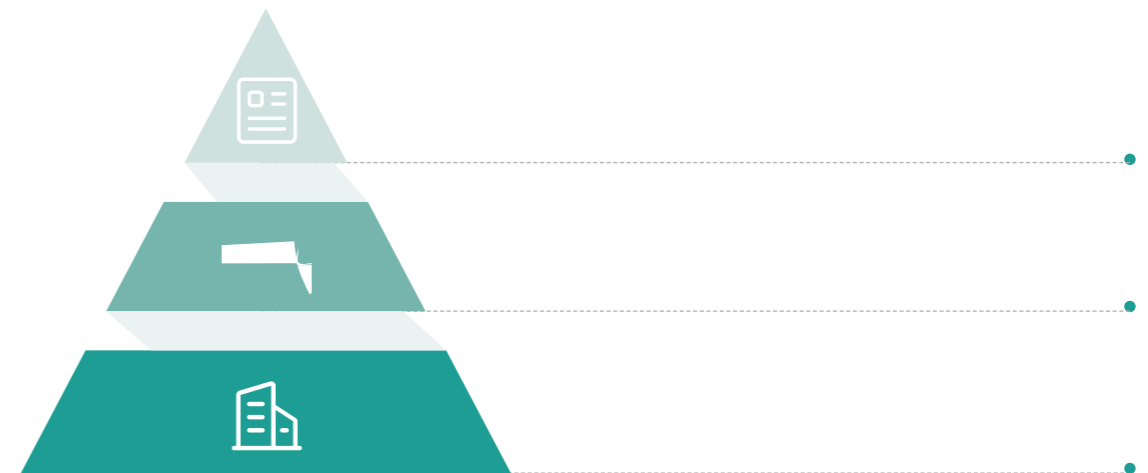
1		· 7° 24	400
2		·	
3		·	

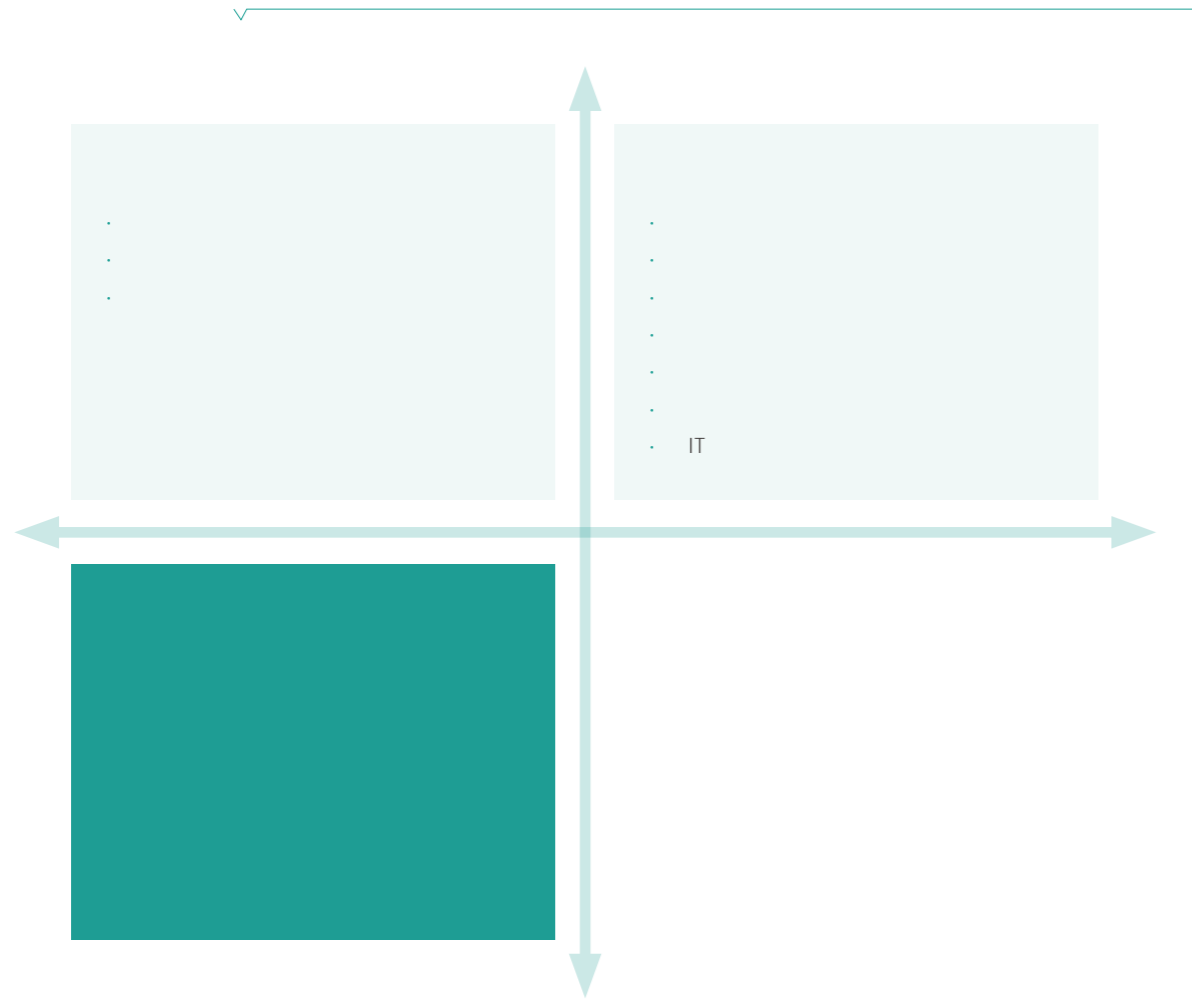


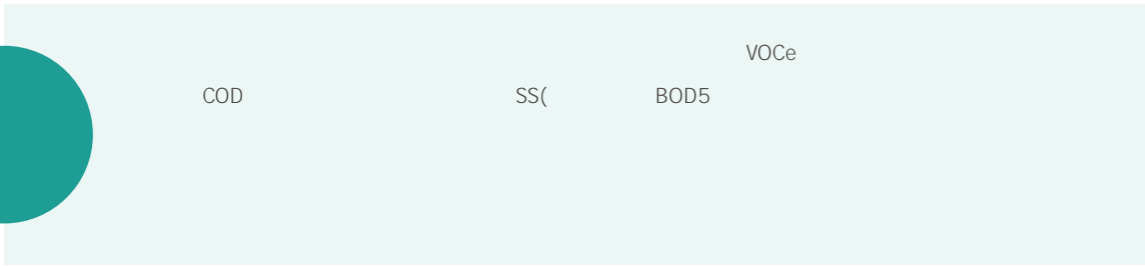
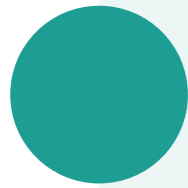
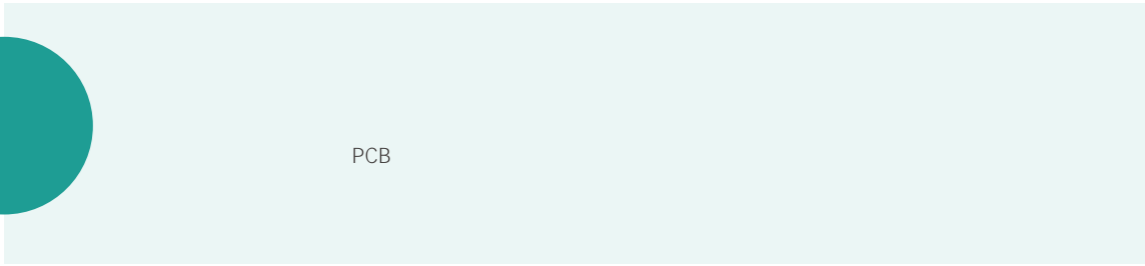
2021 ISO 27001 2022 6

B

2021



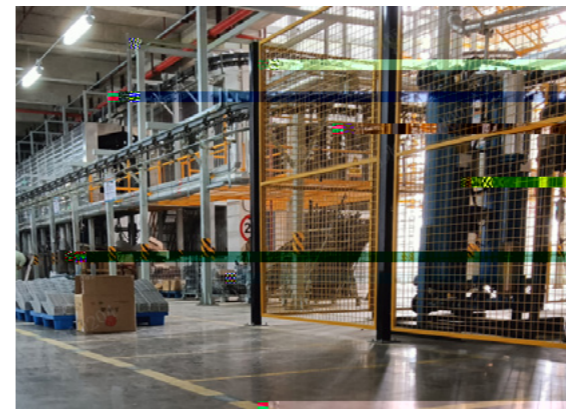
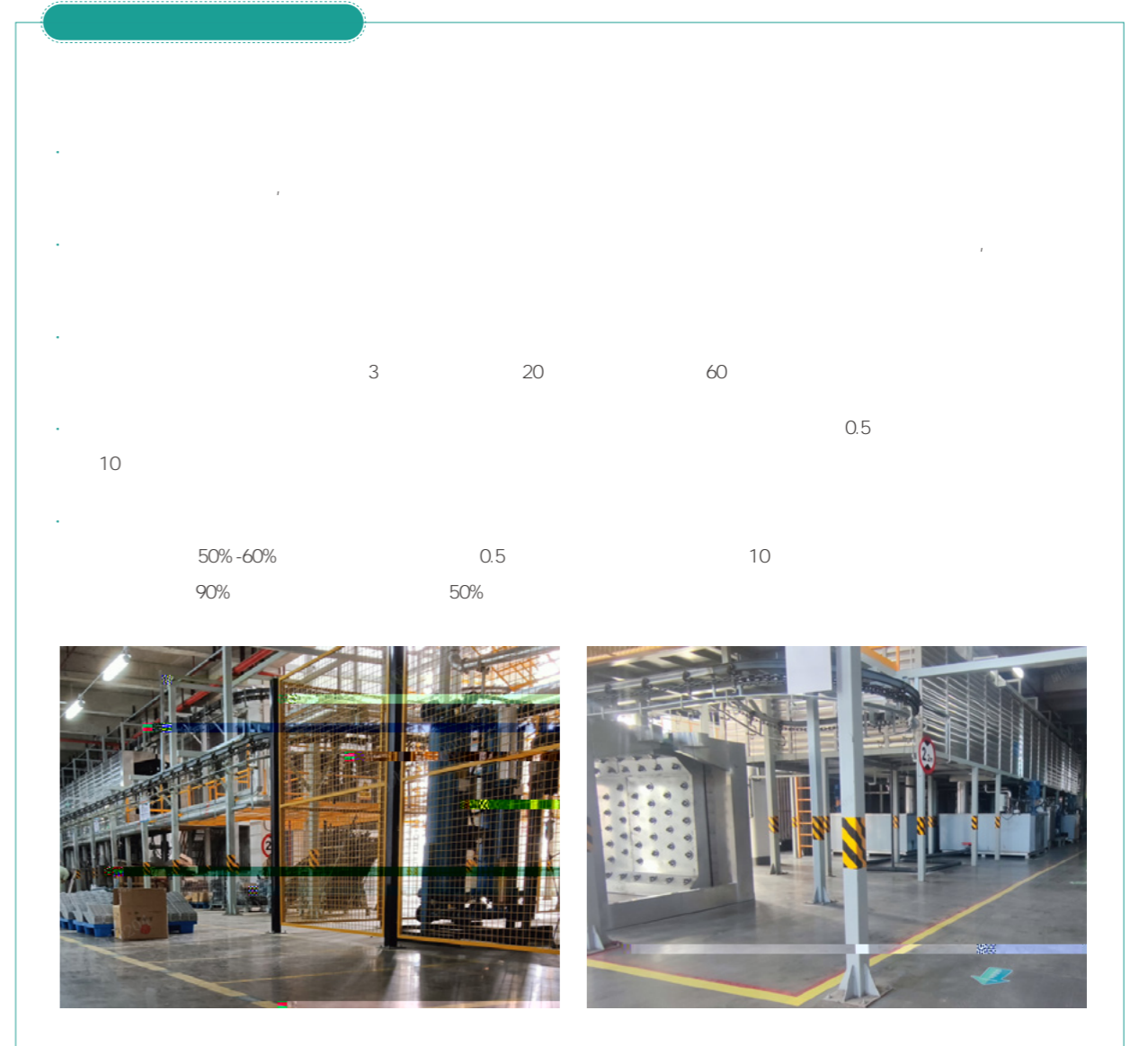




2021

√

			15
			15
	VOCe		
	COD	SS BOD5	



10

3

20

60

0.5

50%-60%

90%

0.5

50%

10



160

150



ECO

✓		
	· · ·	· ·
	· · ·	· · · · ·
	· · · ·	· · · · · ·
	· · · ·	· · · · · ·
	· · · ·	· · · · · ·
	· · · ·	· · · · · ·
	· · · ·	· · · · · ·

✓		
		0.31
	30%	20 /
	60%	160 16.2
	2%	30,000
EVI	EVI	10 1,900
	7,200	

6p8	
	80%

RoHS	
·	40%
·	50%
·	5
·	10
·	

33

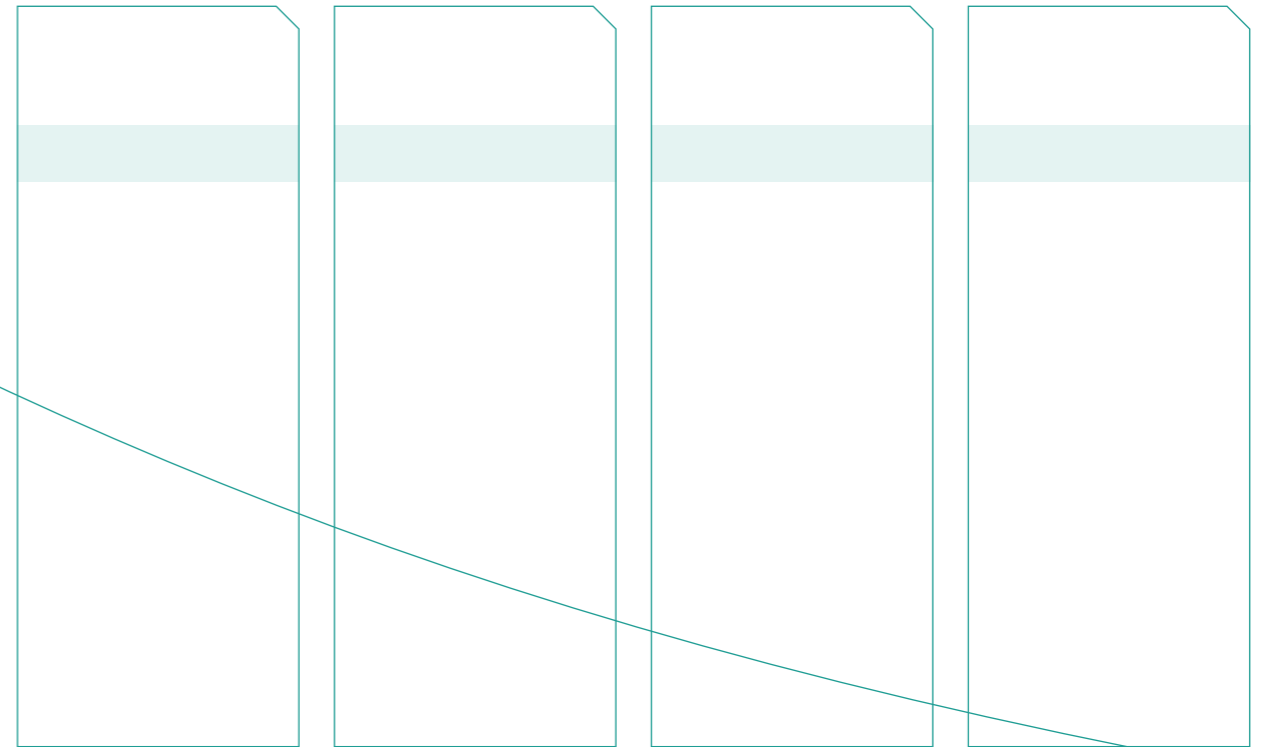
The diagram illustrates a well system with various components labeled in Chinese. At the top, a control cabinet (控制柜) is connected to a wellhead. A power cable (动力电缆) runs down the well. At the bottom, a motor (电机) is connected to a screw pump (螺杆泵) via a coupler (联轴器). A protector (保护器) is also shown. A downhole data acquisition device (井下数据采集装置) is positioned near the motor. The well is shown in a cross-section of the ground.

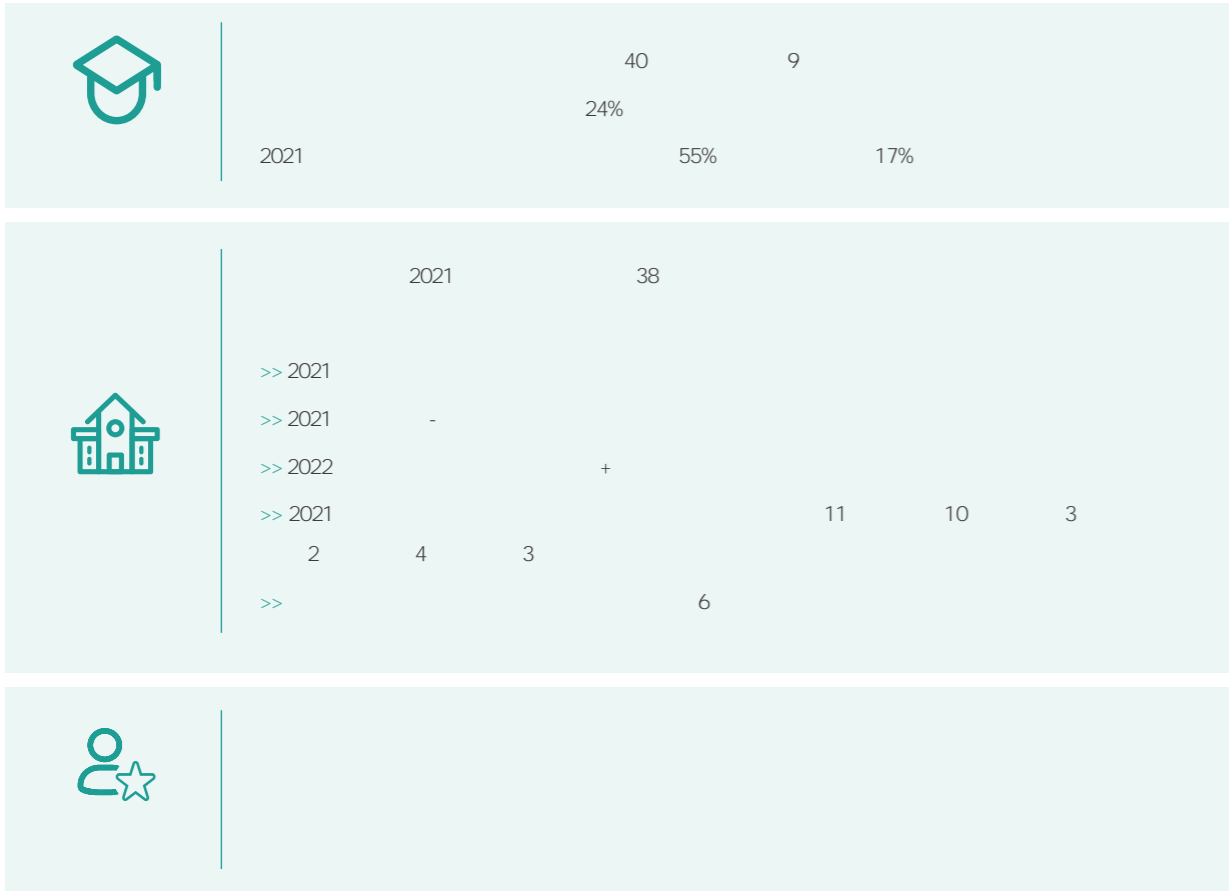
EVI

EVI -25

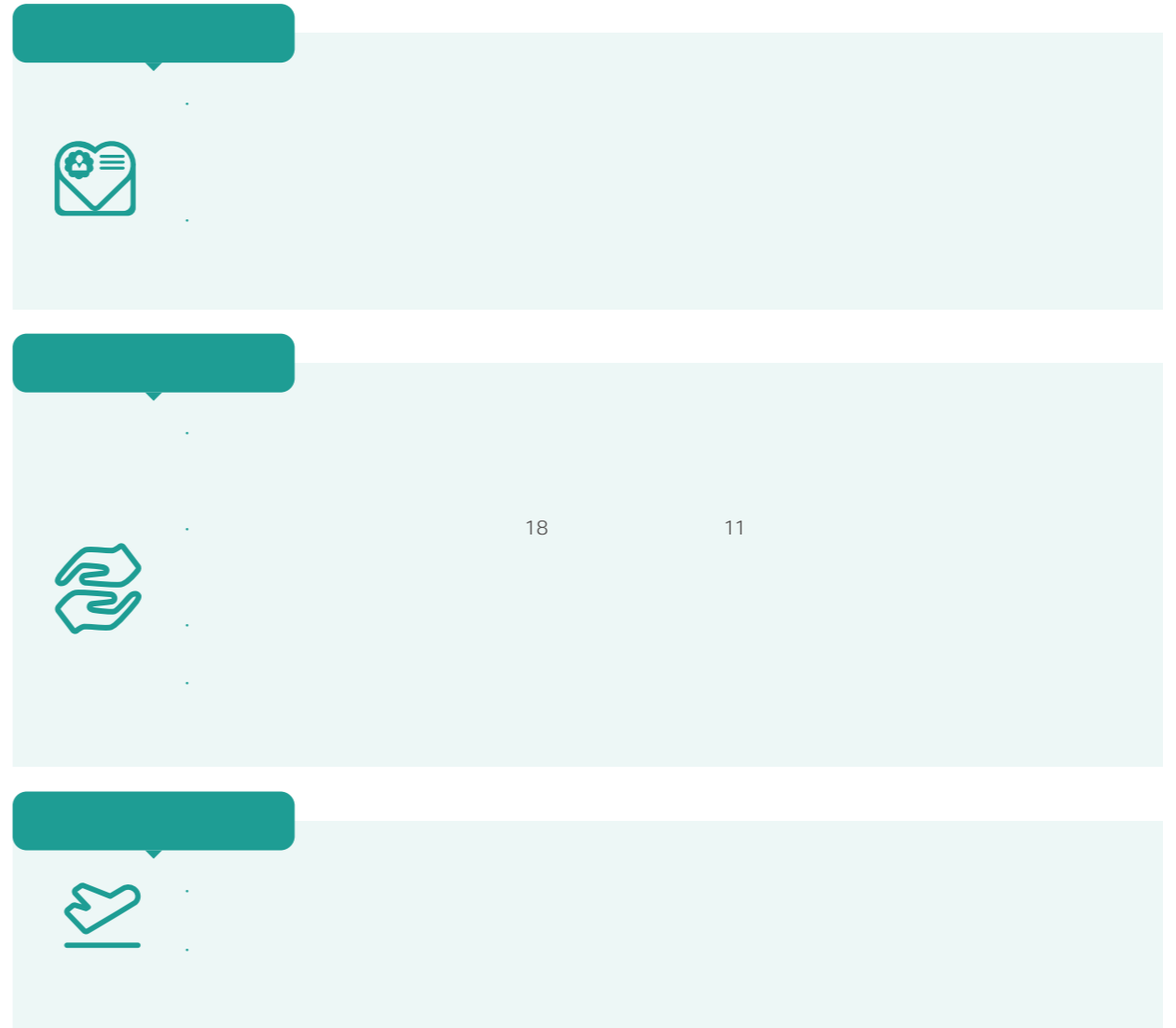
4

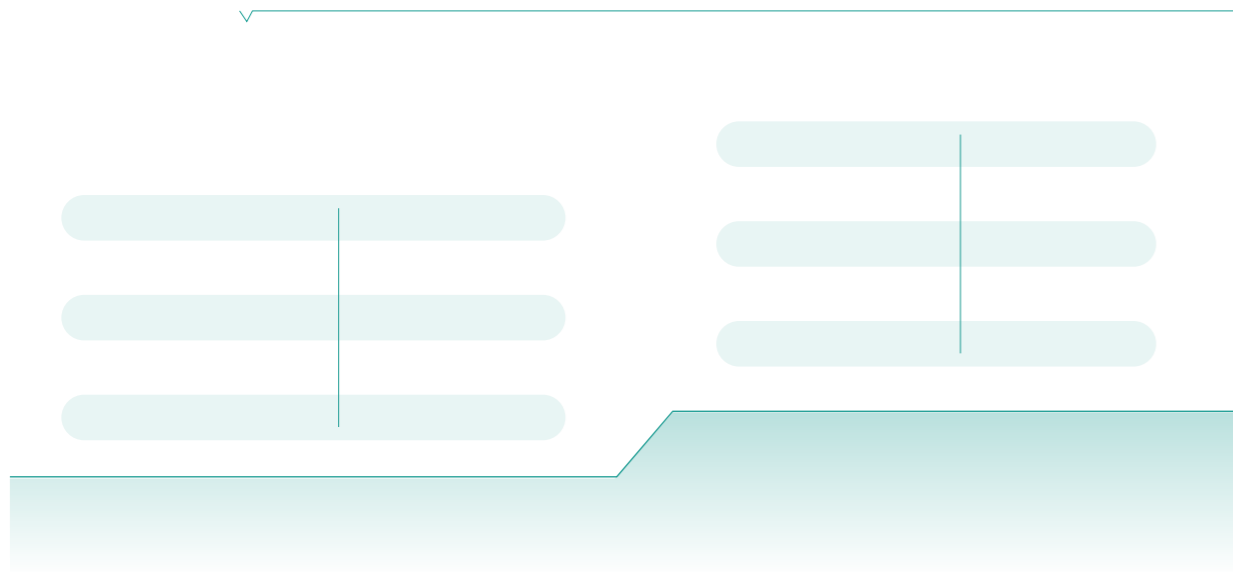
The photograph shows three electronic components. On the left is a large green PCB board with various components. In the center is a smaller green PCB board. On the right is a digital display showing a temperature of 68°C. The display also shows the MEGMEET logo and some text in Chinese.





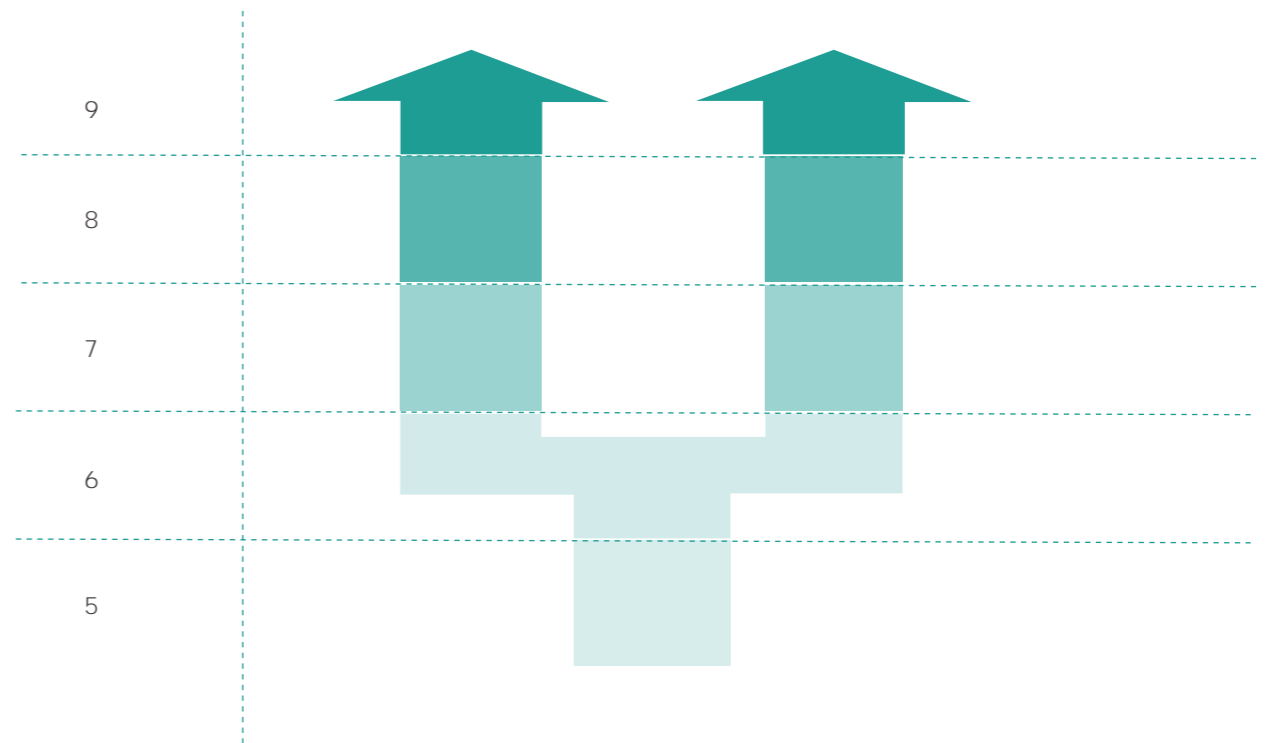
42%

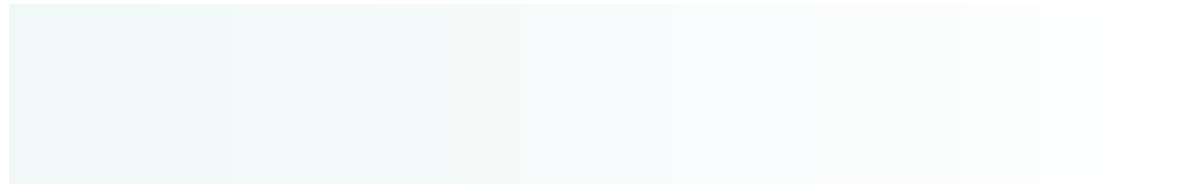
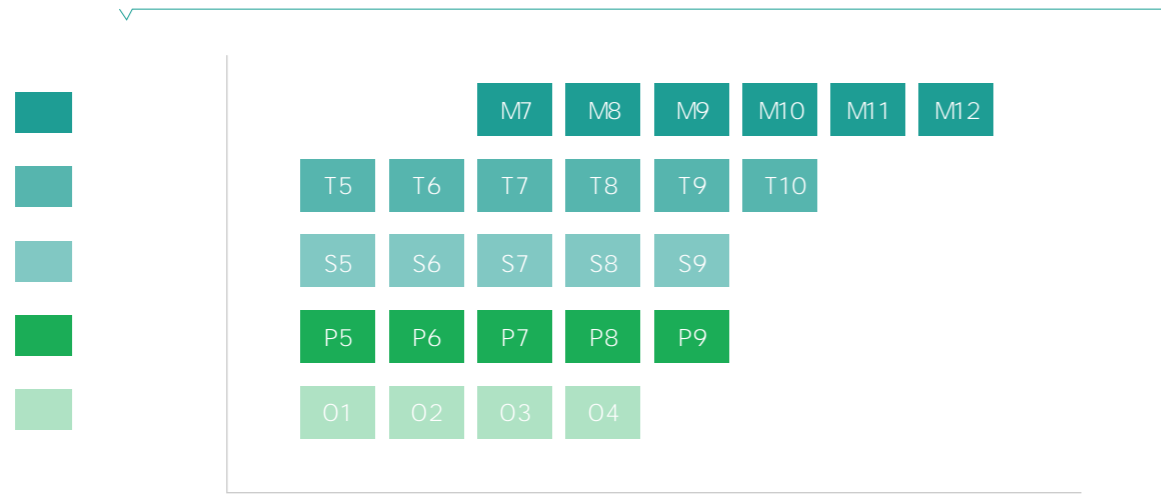


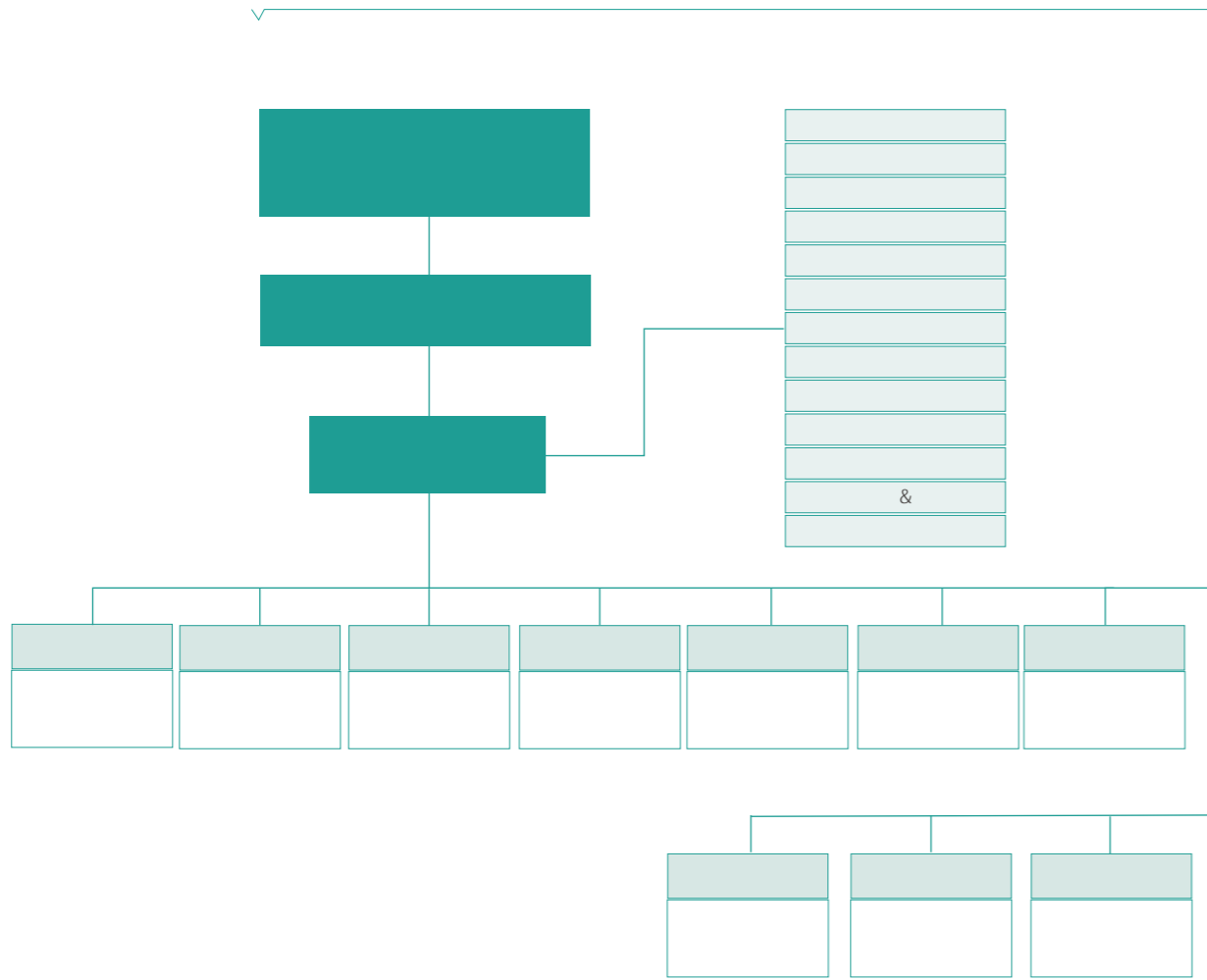


A rectangular box with a folded top-right corner. Inside the box, there are three horizontal lines, each starting and ending with a small circle.

/
 A+ A B+ B C
 +
 M T S
 P O
 " " ✓







ISO 45001

6S

✓

[Redacted]

[Redacted] · ISO 45001

[Redacted]

" 6S "

[Redacted] · 8 24 4

[Redacted]

✓

[Redacted]

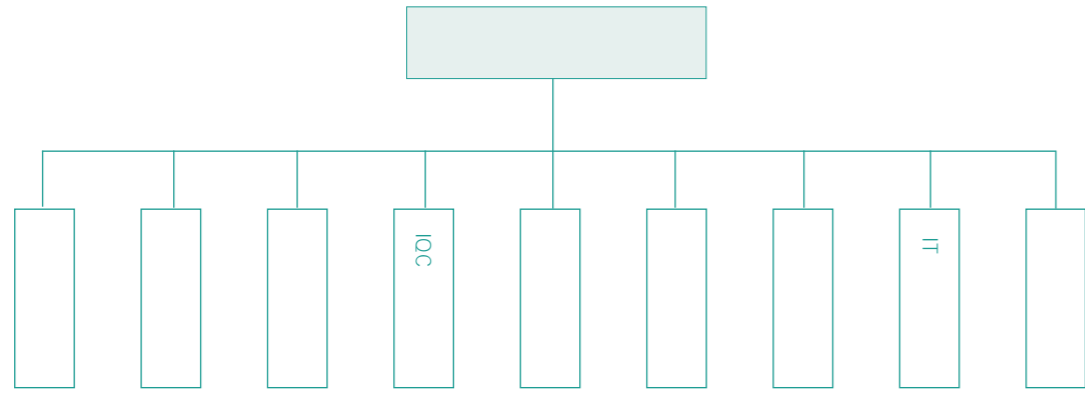
VOCe · 3M

[Redacted]

REACH

Sonk GP

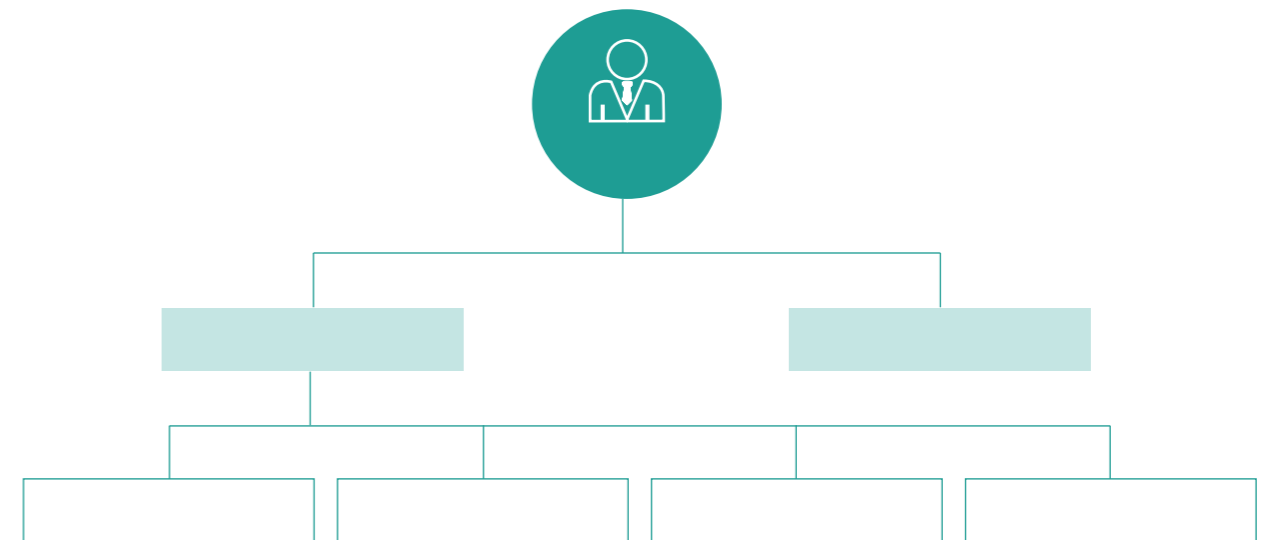
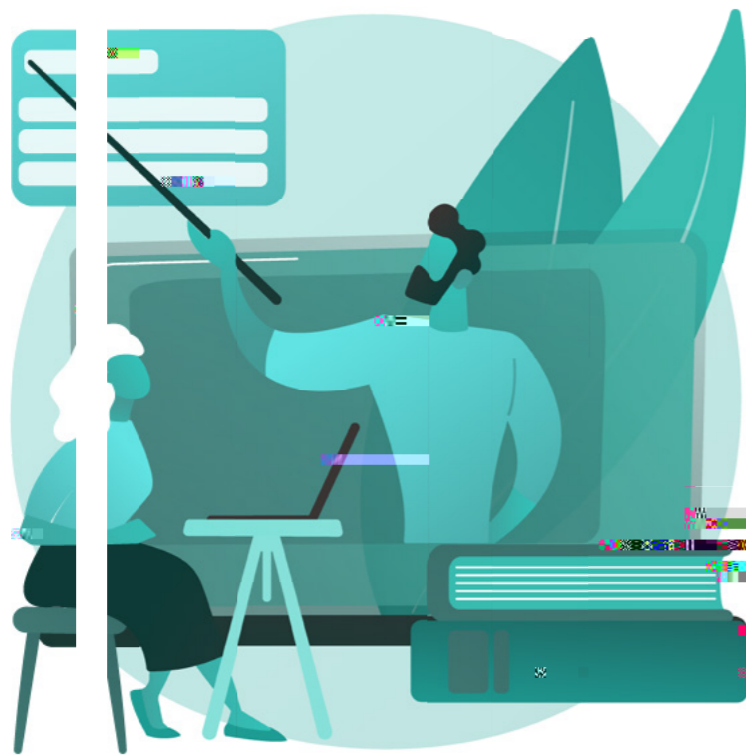
RoHS



2021

15

4000



2021



5



2



1



3

1

1



2

18



3

35



7



3

26

2021

2021

2021



(2019-2021)

3 —

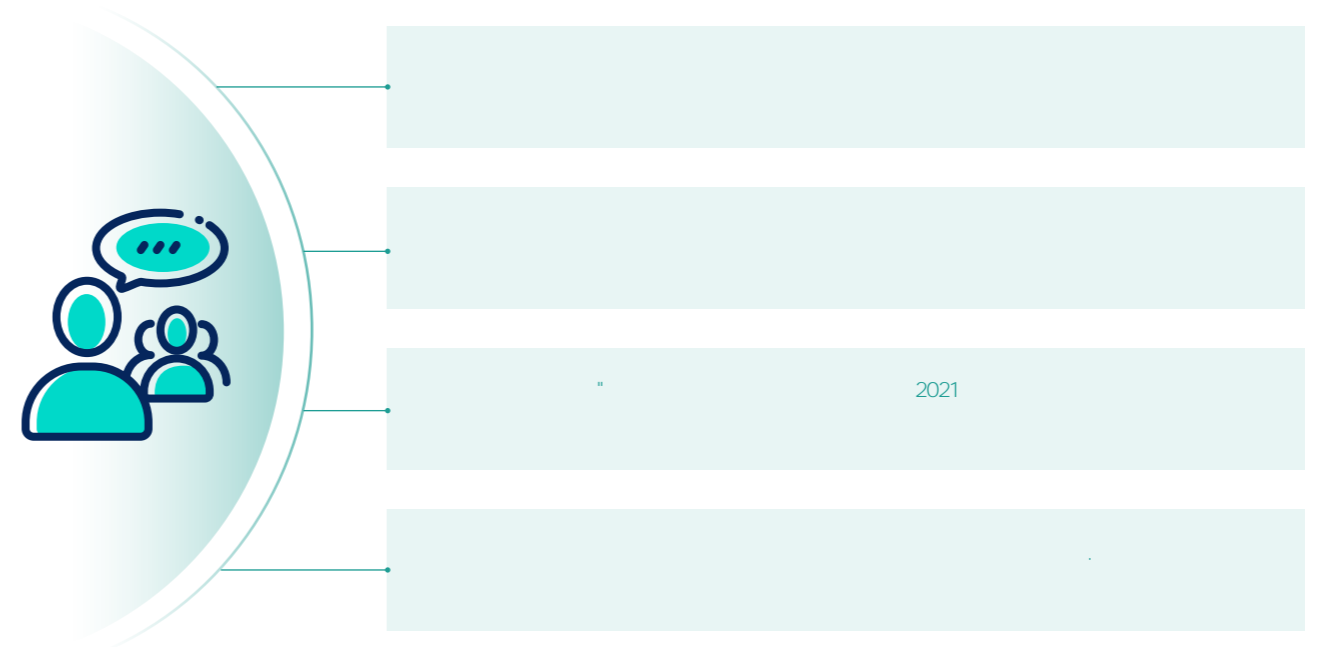
2019-2021

2021

8,532.42

2020

A



2021

5

200

135

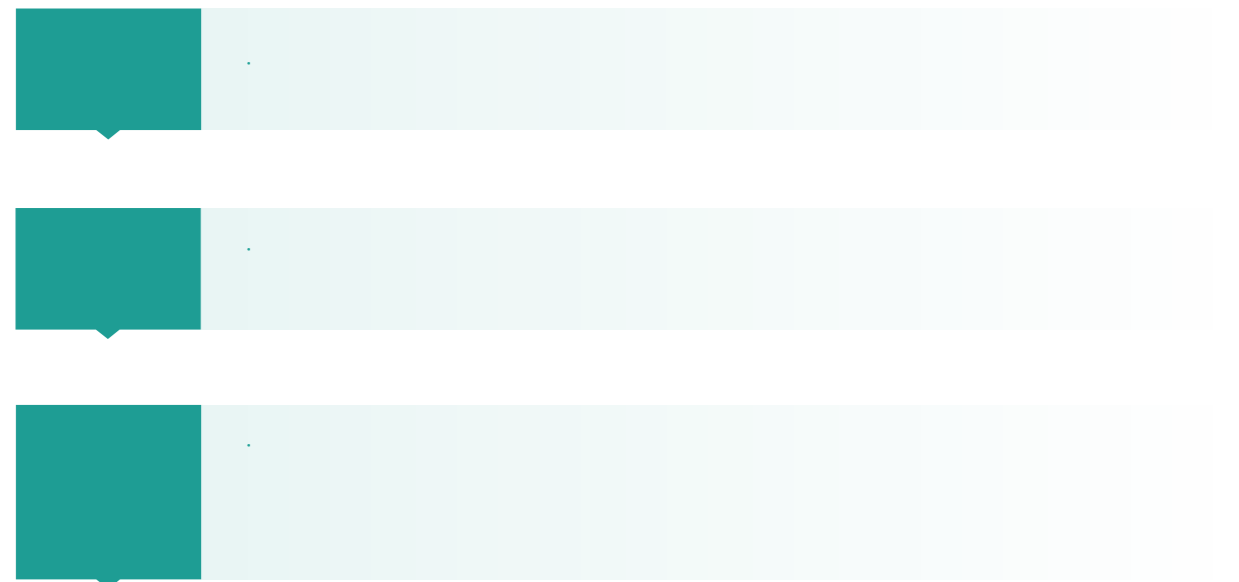
2021

2021 年
公司完成供应商现场审核数量

Reboding Temblafe, CMRT

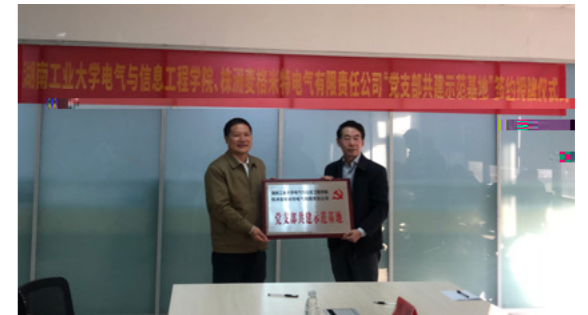
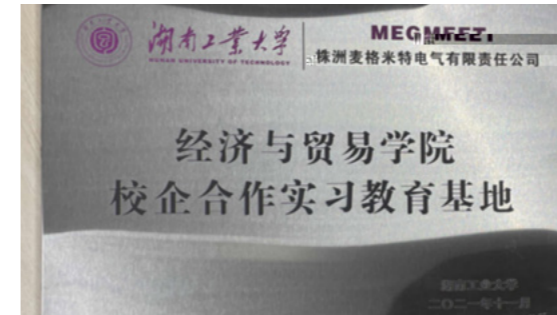
RMI

Conficf Minedale



2017	42.5		
2021	700	18	

2020	11		
2017			
2021		100	

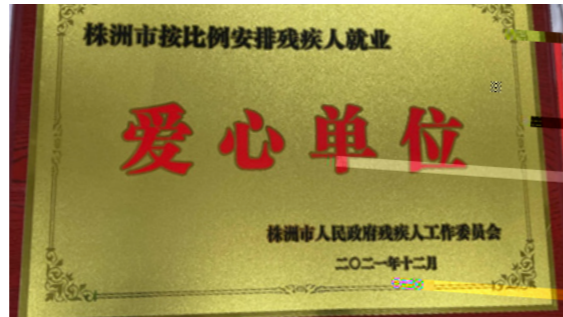


2021	3		
2021			
[2021]9			



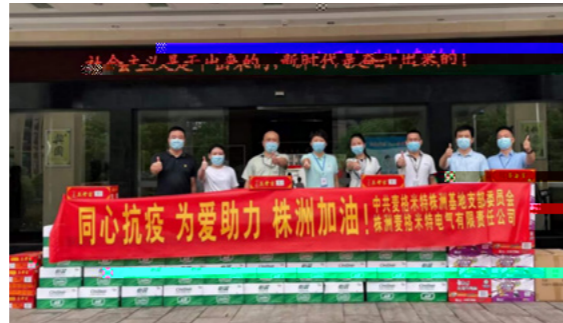
“ ”

2021 12



2021 7 29

7 30



2021 8 10

WaheLane

MeMaj-CK1000 2

35

2021 6

2021 12



2021

1

2020

“ ”

2020

2020

“ ”

10

AA “ ”

“ ”

3

4

6

2021

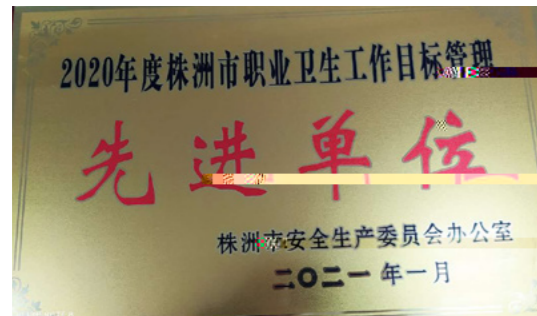
12

2021

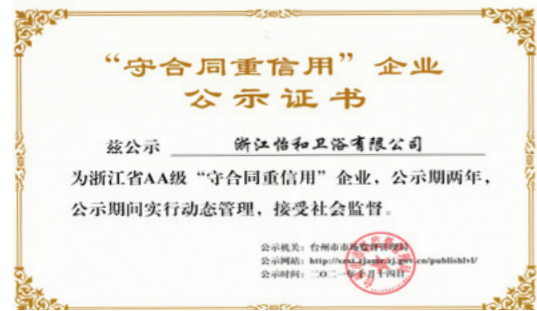
2021

“ ”

“ ”



2020



AA



2021	6	3
------	---	---

ESG

2021		
	-	29,930.78
		62.31
		2,382.45
		6,759.52
		20,421.87
		304.63
		144,614.95
		112,845
		0
		25,685
SOj		0.38
		81,511
		374.43
		17,389.78
		17,764.21

2020	5	2021	5	28
2.17kg/m ³				0.5810fCO2/

MWh

2021		
		4
		4
		0
		4,285
		2,599
	%	60.65
		1,686
	%	39.35%

2021			
	>50		96
	>50	%	2.24
	30 50		2,725
	30 50	%	63.59
	<30		1,464
	<30	%	34.17
			206
		%	95.19
		%	4.81
			43
		%	10.27
			13
			4,285
			1,714
			2,571
			148,261
			58,276
			89,985
			34
			35
			133,692
			0
			3
			2,769
		%	90
			15
			62
	2021		269
			13
			178
			78
			339
			46,067.42
		%	11.09
			801

2021			
			621,296.7
			0.78
			415,573.77
			3.89
			7,921.11
			1.6
			2
			5
			3
			7
		%	40
			1
		%	20
			3
			0
			3,427

		2
		2
		3
		4
		5
		6
		7
		3.1
		6.1
		1
	2	
		3
		4
		5
		6
		7
		6.1
		6.1
		6.1
		6.1
		6.1
		6.1
		5.1
		5.1
		5.4
		5.1
		5.1
		5.2
		5.3
		3.3
		3.3
		3.3
		6.2
		6.2
		3.3
		3.3

			4
			4
			4.2
			4.3
			4.4
			4.2
			4.2
			4.4
			4
			4.1
			4
			4
			4.3
			4
			6.3
			6.3
			6.3
			2
			2
			3
			4
			5
			6

1 —

8.1		1 2 3 4 5 6 7	
8.2		3.1	
8.3		2	
8.4		1 2 3 4 5 6 7	
8.5		5	
8.6		4	
8.6		4	
8.6		4.2	
8.6		4.3	
8.6		4.3	
8.6			
8.6		6.2	
8.6		4	
8.7		4	
8.7		8ESG	
8.7		4	
8.7		4.3	
8.7		4.3	
8.7		4.3	
8.7			
8.7			
8.7		4	
8.8			
8.9			

8.10		3.2
8.10		3.2
8.10		3.2
8.10		3.2
8.11		5.1
8.11		5.4
8.11		5.2
8.11		5
8.12		
8.13		1 2 3 4 5 6 7

